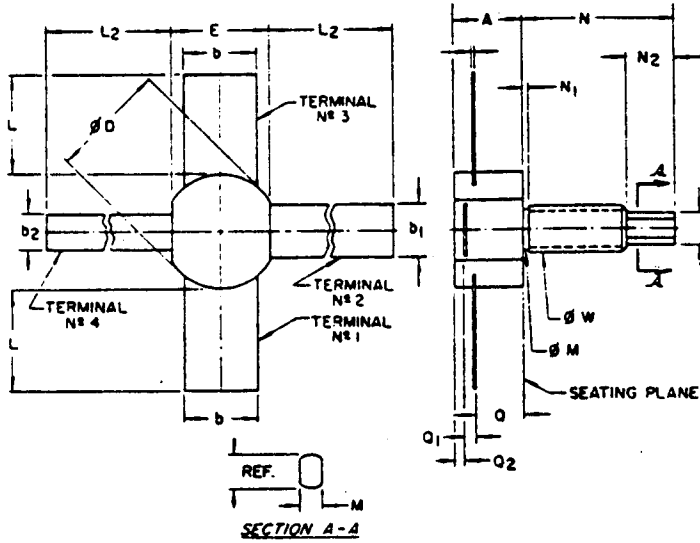


NOTES :

1. Refer to rules for dimensioning semiconductor product outlines
2. Typical all leads.
3. Body contour optional within  $Q_2$ ,  $\varnothing D$  and E.
4.  $\varnothing W$  is pitch diameter of coated threads. Ref: Unified Screw Threads, ANS B1.1-1960.

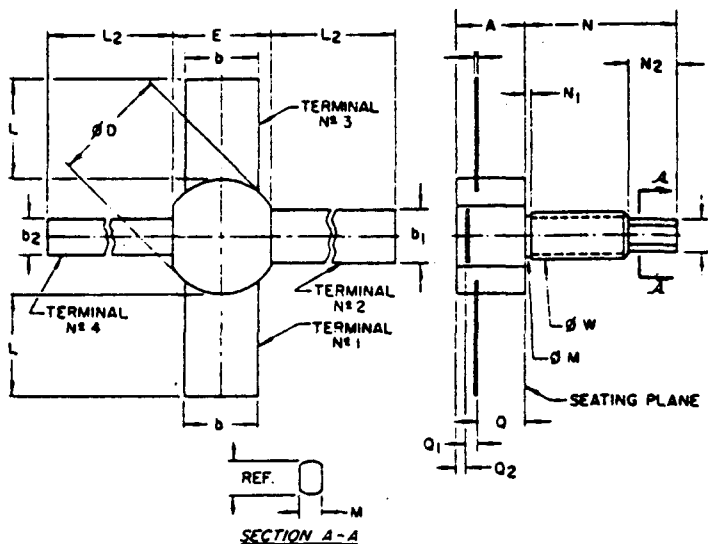


VARIATIONS (ALL DIMENSIONS SHOWN IN MILLIMETERS)

SYMBOL	AA		NOTE			NOTE			NOTE			NOTE
	MIN.	MAX.		MIN.	MAX.		MIN.	MAX.				
A	3.81	5.84										
b	4.953	5.207										
b <sub>1</sub>	3.429	3.683										
b <sub>2</sub>	2.413	2.667										
c	.102	.254	2									
ØD	7.75	8.12	3									
ØD <sub>1</sub>	2.80	3.30										
E	6.99	7.62	3									
L	6.74	7.36										
L <sub>2</sub>	11.56	12.95										
M	1.35	1.62										
ØM	3.05	4.14										
N	10.80	11.93										
N <sub>1</sub>	—	1.98										
N <sub>2</sub>	2.80	3.81										
Q <sub>2</sub>	3.05	4.31										
Q <sub>1</sub>	.64	1.14										
Q <sub>2</sub>	—	—	3									
ØW	8-32 UNC-2A		4									
NOTE	1											
REF.	Item 270C											
ISSUE	A June, 1971											
JEDEC SEMICONDUCTOR DEVICE OUTLINES			TITLE STUD-MOUNTED STRIPLINE HEADER FAMILY			ISSUE A		DATE JUNE 1971		TO-216AA		

NOTES :

1. Refer to rules for dimensioning semiconductor product outlines
2. Typical all leads.
3. Body contour optional within  $Q_2$ ,  $\phi D$  and  $E$ .
4.  $\phi W$  is pitch diameter of coated threads. Ref: Unified Screw Threads, ANS B1. 1-1960.



VARIATIONS (ALL DIMENSIONS SHOWN IN INCHES)

SYMBOL	AA		NOTE			NOTE			NOTE			NOTE
	MIN.	MAX.		MIN.	MAX.		MIN.	MAX.		MIN.	MAX.	
A	.150	.230										
b	.195	.205										
b <sub>1</sub>	.135	.145										
b <sub>2</sub>	.095	.105										
c	.004	.010	2									
phi D	.305	.320	3									
phi D <sub>1</sub>	.110	.130										
E	.275	.300	3									
L	.265	.290										
L <sub>2</sub>	.455	.510										
M	.053	.064										
phi M	.120	.163										
N	.425	.470										
N <sub>1</sub>	—	.078										
N <sub>2</sub>	.110	.150										
Q	.120	.170										
Q <sub>1</sub>	.025	.045										
Q <sub>2</sub>	—	—	3									
phi W	8-32 UNC-2A		4									

NOTE 1  
 REF. Item 270G  
 ISSUE A June, 1971

JEDEC SEMICONDUCTOR DEVICE OUTLINES	TITLE STUD-MOUNTED STRIPLINE HEADER FAMILY	ISSUE A	DATE JUNE 1971	<b>TO-216AA</b>
---	--	------------	----------------------	-----------------